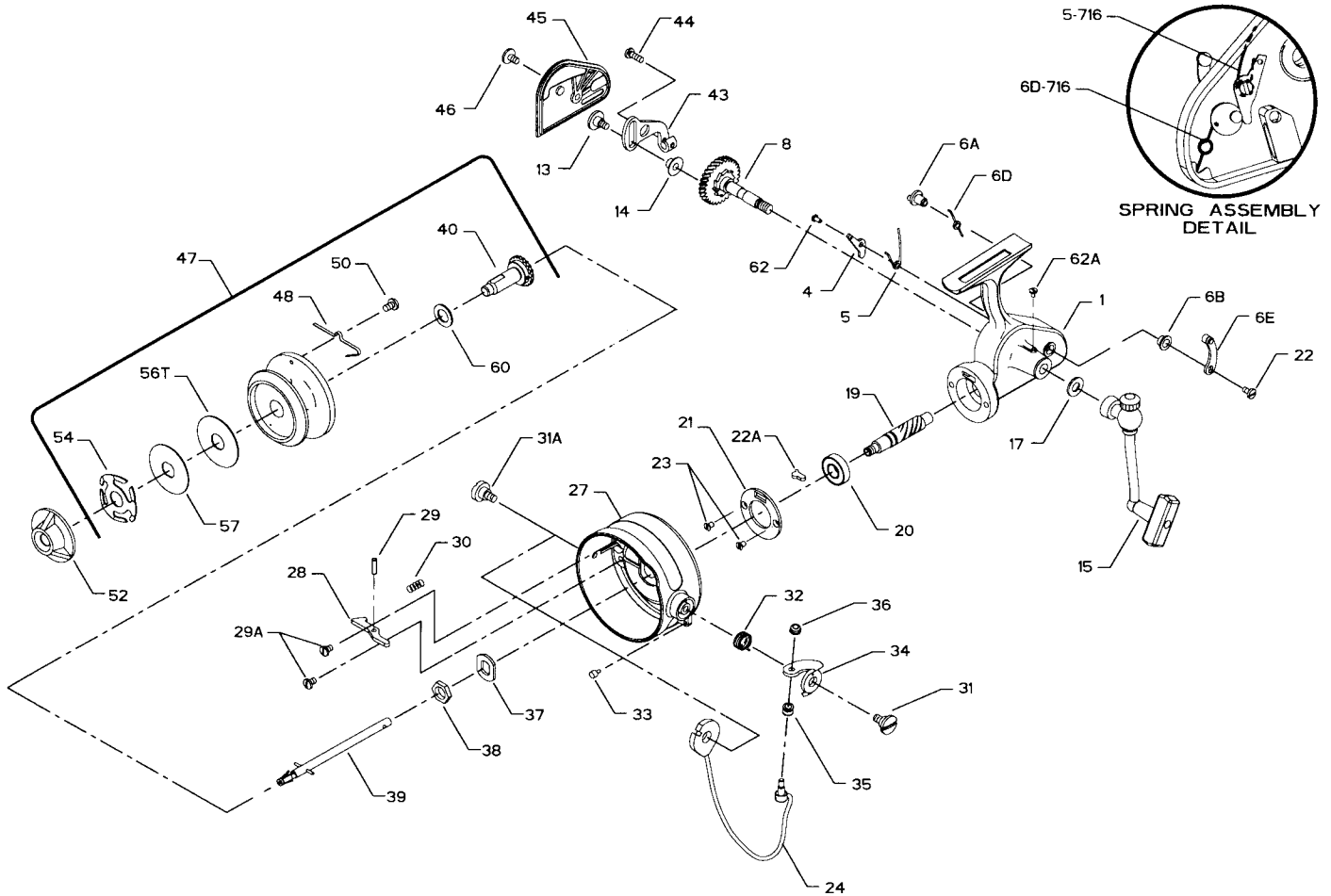




PARTS AND PRICE LIST FOR MODEL 716Z



Key No.	Part No.	Description	Price	Key No.	Part No.	Description	Price
1	1-716Z	Housing w/Bushing	\$11.25	31A	31A-716	Bail Screw	\$1.00
4	4-716	Dog	.80	32	32-716	Bail Spring	.40
5	5-716	Dog Spring	.40	33	33R-712	Bail Arm Bumper	.40
6A	6A-716	Eccentric	1.10	34	34-716	Bail Arm	1.00
6B	6B-700Z	Eccentric Liner	.40	35	35-716	Line Roller	2.00
6D	6D-716	Eccentric Spring	.40	36	36-700	Bail Lock Nut	.40
6E	6E-716	Eccentric Lever	.90	37	37-716	Rotor Cup Washer	.40
8	8-716	Main Gear Ratchet and Shaft	8.25	38	38-720	Rotor Cup Nut	.40
13	13-716	Crosswind Screw	.50	39	39-716	Spool Shaft	3.00
14	14-716	Crosswind Roller	.45	40	40-716	Spool Sleeve	2.00
15	15-716Z	Handle Assembly (Complete)	6.60	43	43-716	Crosswind Arm	1.00
17	17-716	Handle Washer	.50	44	44-716	Crosswind Shaft Screw	.40
19	19-716	Pinion Gear	8.05	45	45-716Z	Housing Plate	2.00
20	20-722	Pinion Bearing	12.95	46	46-716	Housing Plate Screw	.40
21	21-716	Bearing Retainer	1.50	47	47-716Z	Spool (Complete)	11.00
22	22-109	Eccentric Screw	.50	48	48-716	Click Spring	.40
22A	22-716	Bail Release Ramp	1.00	50	50-716	Click Screw	.40
23	23-716	Bearing Retainer Screw	.40	52	52-716Z	Drag Knob	2.00
24	24-716	Bail Wire	5.80	54	54-716	Drag Spring	1.00
27	27-716Z	Rotor Cup	8.10	56T	56T-716	Drag Washer (Teflon®)	.80
28	28-716	Bail Release Arm	1.10	57	57-716	Metal (Keyed) Washer	.60
29	29-716	Release Arm Pin	.40	60	60-716	Rear Drag Washer	.40
29A	29A-716	Release Arm Screw (2 req.)	.40	62	62A-716	Dog Screw	.40
30	30-716	Arm Release Spring	.40	62A	62A-716	Oiler Screw	.40
31	31-716	Bail Arm Screw	1.00				